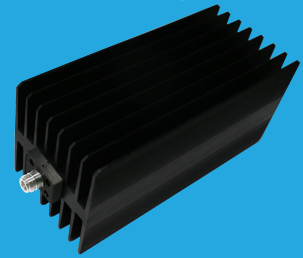


## QCT18K5

### DC~18GHz, 500W

Features:  
 \* Low VSWR  
 \* Broadband

Applications:  
 \* Transmitters  
 \* Antennas  
 \* Laboratory Test  
 \* Impedance Matching



### Electrical

Frequency Range: DC~18GHz  
 Average Power\*1: 500W@25°C  
 Impedance: 50Ω  
 Peak Power: 5KW (5μS pulse width, 5% duty cycle) @N DC~12.4GHz  
 1KW (5μS pulse width, 25% duty cycle) @N 18GHz

[1] Derated linearly to 25W@120°C.

### VSWR

Frequency (GHz)	N	7/16 DIN
DC~4	1.2	1.2
DC~6	-	1.25
DC~8	1.25	-
DC~12.4	1.35	-
DC~18	1.6	-

### Mechanical

Size\*2: 509\*120\*110mm  
 20.039\*4.724\*4.331in

Connector: N, 7/16 DIN

[2] Exclude connectors.

### Environmental

Temperature: -55~+125°C

### How To Order

#### QCT18K5-X-Y

X: Frequency in GHz

Y: Connector type

Connector naming rules:

N - N male(Outline A)

NF - N female

7 - 7/16 DIN male(Outline B)

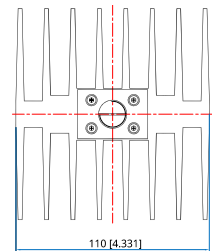
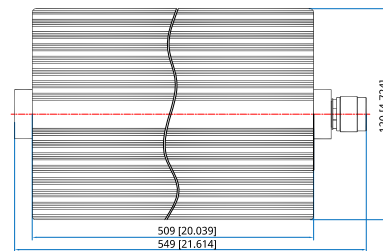
7F - 7/16 DIN female

Examples:

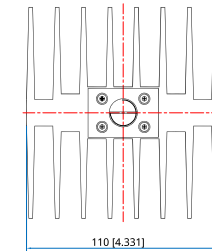
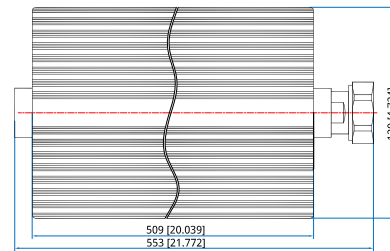
To order a termination, DC-12.4GHz, N male, specify  
 QCT18K5-12.4-N

Customization is available upon request.

### Outline Drawings



Outline A



Outline B

Unit: mm [in]

Tolerance: ±1mm [±0.04in]